

**North Devon Link Road – NDLR – A361
(Portmore to Borners Bridge)
Traffic Bulletin – 20.05.24**

**We continue to work nights Monday to Friday,
dates and times have been included below.**

GRIFFITHS

CONSIDERATE
CONSTRUCTORS
SCHEME

Landkey Roundabout to North Aller Roundabout

From 20.05.24 to 15.06.24 on various dates, - The A361 / North Devon Link Road will be closed at night from 8pm to 6am between North Aller Roundabout and Landkey Roundabout for various works.

We will continue to work at night to minimize the disruption to traffic and we will update you via separate bulletins with more detail of the works on a regular basis. Please see below for the diversion map. Please see diversion map on page 2 of this bulletin.

We apologise for any inconvenience.

Landkey Roundabout to North Aller Roundabout

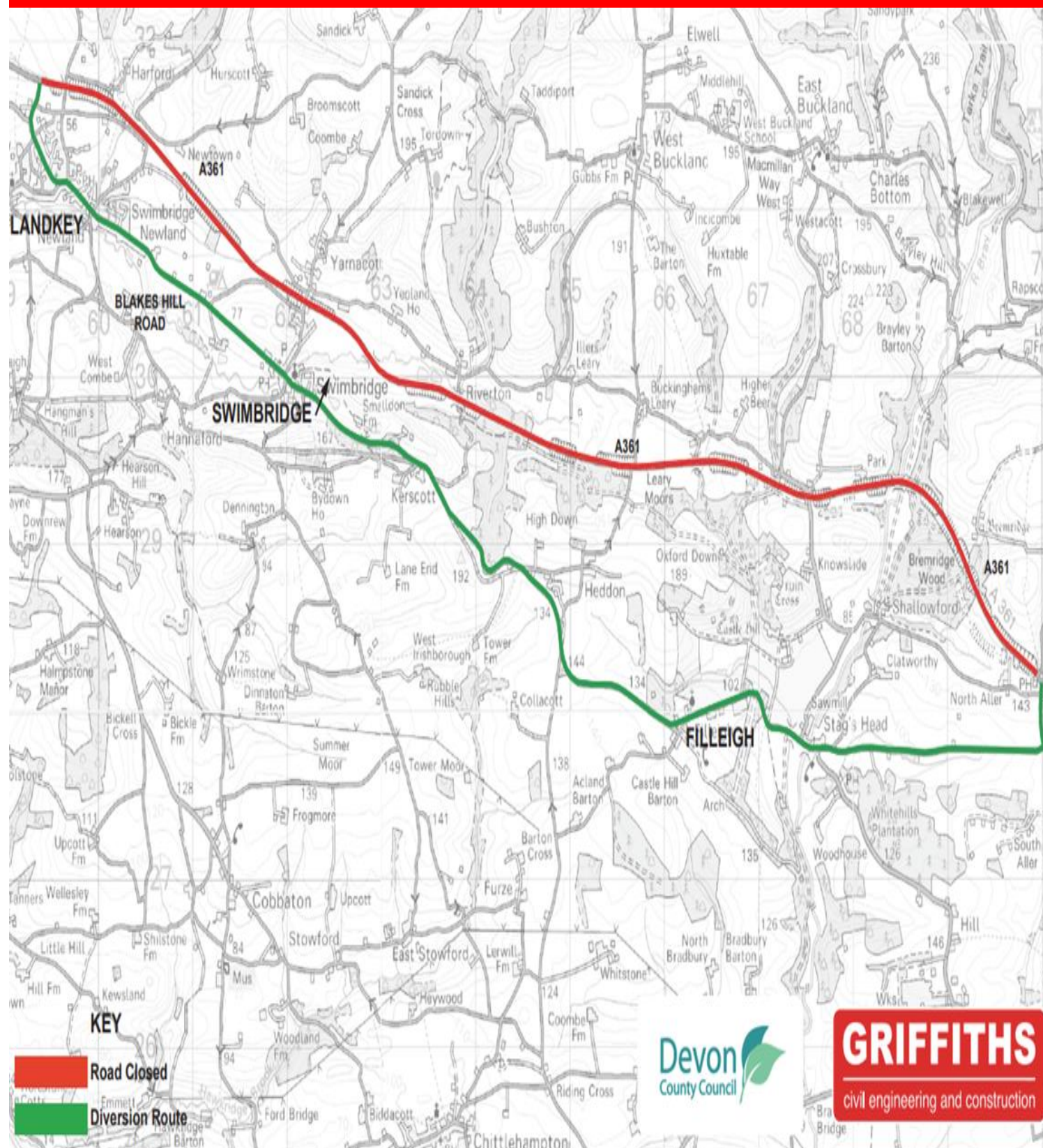
Start Day / Date	Finish
Mon: 20.05.24 – 8pm	Tues: 21.05.24 – 6am
Tues: 21.05.24 - 8pm	Wed: 22.05.24 - 6am
Wed: 22.05.24 – 8pm	Thur: 23.05.24 - 6am
Thur: 23.05.24 – 8pm	Fri: 24.05.24 - 6am
Start Day / Date	Finish
Mon: 03.06.24 - 8pm	Tues: 04.06.24 - 6am
Tues: 04.06.24 - 8pm	Wed: 05.06.24 - 6am
Wed: 05.06.24 – 8pm	Thur: 06.06.24 - 6am
Thur: 06.06.24 - 8pm	Fri: 07.06.24 - 6am
Fri: 07.06.24 – 8pm	Sat: 08.06.24 – 6am
Start Day / Date	Finish
Mon: 10.06.24 - 8pm	Tues: 11.06.24 - 6am
Tues: 11.06.24 - 8pm	Wed: 12.06.24 - 6am
Wed: 12.06.24 – 8pm	Thur: 13.06.24 - 6am
Thur: 13.06.24 - 8pm	Fri: 14.06.24 - 6am
Fri: 14.06.24 – 8pm	Sat: 15.06.24 – 6am

**North Devon Link Road – NDLR – A361
(Portmore to Borneers Bridge)
Traffic Bulletin – 20.05.24**

GRIFFITHS

CONSIDERATE
CONSTRUCTORS
SCHEME

Landkey Roundabout to North Aller Roundabout



North Devon Link Road – NDLR – A361 (Portmore to Borners Bridge) Traffic Bulletin – 20.05.24



SCAN ME

GRIFFITHS

Borners Bridge - A361 North Molton Spur Road Closure

The road to North Molton from the A361 at Borners Bridge will be closed on various nights (Listed below) on 20.05.24 to 23.05.24 between Marsh Lane and A361 for essential works. 10pm to 6am. There will also be 3 x Way Traffic Lights, A361 East & West Bound, including Station Rd, from 10pm – 6am.

The diversion route is on page 3 of this bulletin. We apologise for any inconvenience.

Day / Date	Start	Finish
Mon: 20.05.24	10pm	Tues: 21.05.24 - 6am
Tues: 21.05.24	10pm	Wed: 22.05.24 - 6am
Wed: 22.05.24	10pm	Thur: 23.05.24 - 6am
Thur: 23.05.24	10pm	Fri: 24.05.24 – 6am

For all Traffic related matters
24/7 call Traffic Safety Control
Officer (TSCO)

Tel: 07889 225393*

Your Public Liaison Officer for
the NDLR is Rebecca
Edmondson of Griffiths. She
can be contacted:

E: NDLR@alungriffiths.co.uk

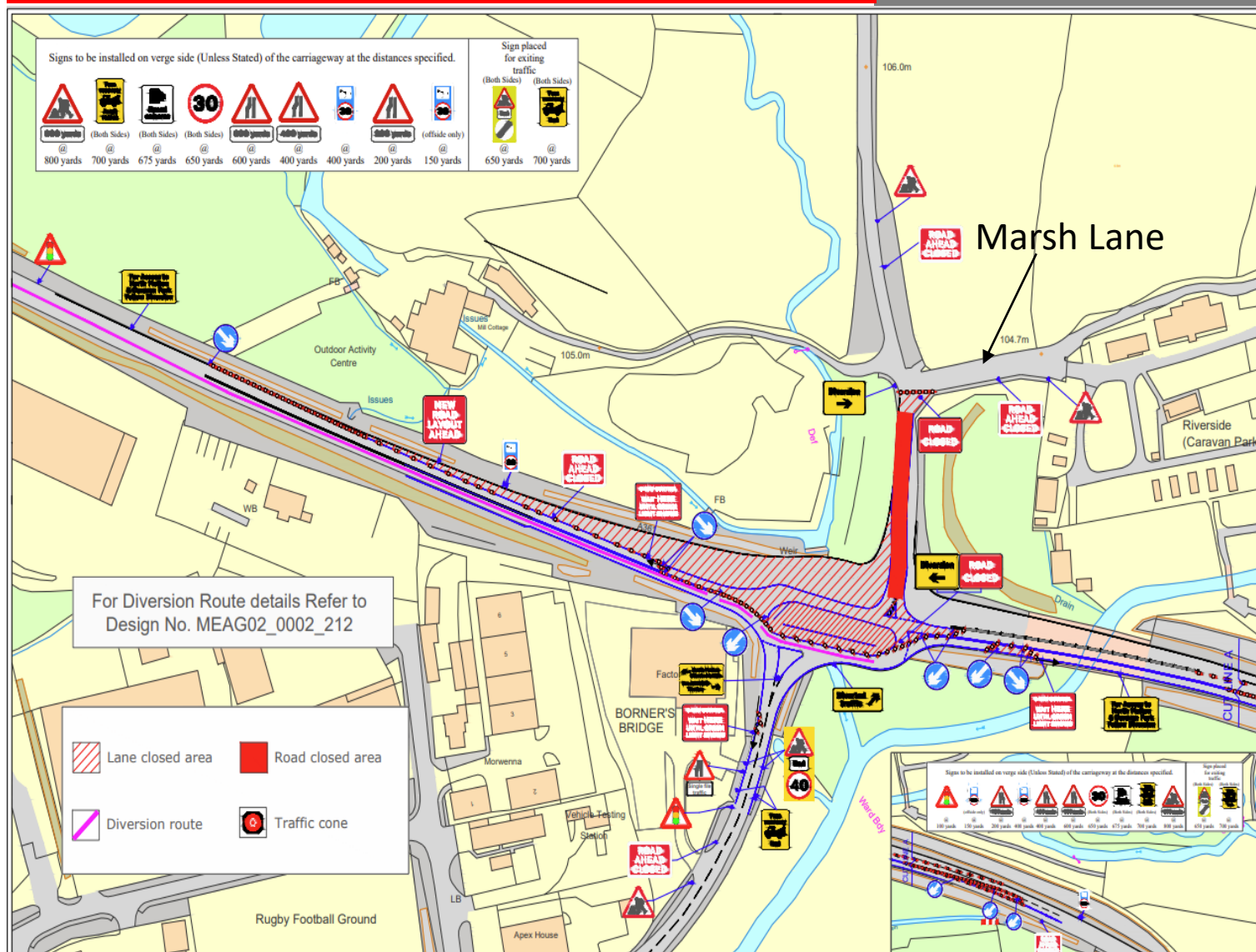
T: 0330 041 4637*

Calls are monitored out of
normal work hours and a
voicemail facility is available.
Please check out our project
website :

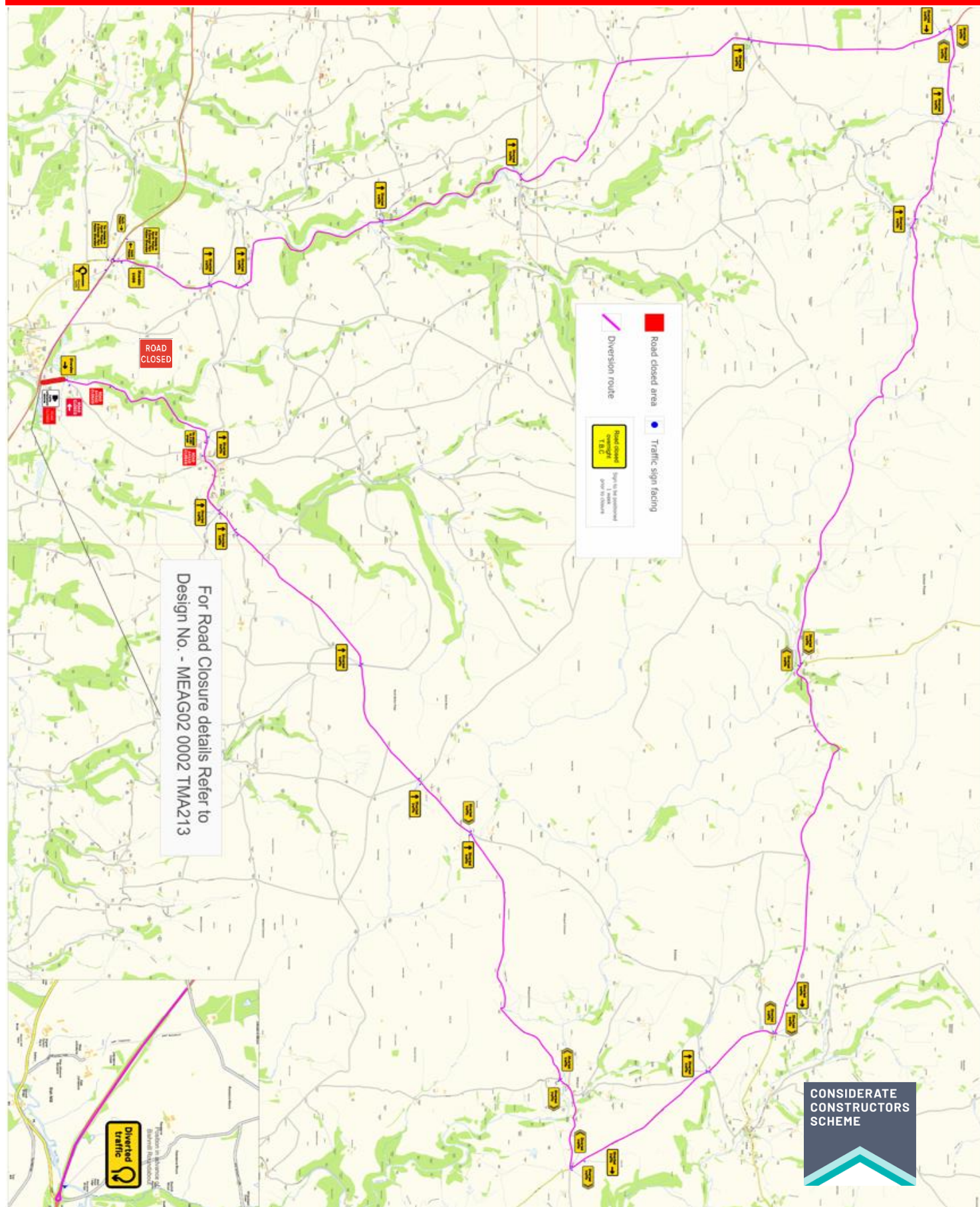
community.alungriffiths.co.uk

If you would like to subscribe
to receive future Newsletters
and Bulletins, please click
[HERE](#) and complete the online
form for Mail Chimp. OR use
this QR code:

Borners Bridge- A361 - North Molton Spur Road Closure



Bourners Bridge - A361 North Molton Spur Road Closure - Diversion



North Devon Link Road – NDLR – A361 (Portmore to Borneers Bridge) Traffic Bulletin – 20.05.24

GRIFFITHS

Night Closures – Landkey Roundabout to Portmore Roundabout – May 2024

Road closures are required for the Installation of Landkey Footbridge and other works between Portmore and Landkey.

Day / Date	Start	Finish
Fri: 24.05.24	23.59pm	Sat: 25.05.24 – 4am
Mon: 27.05.24	BH No Work	Tues: 28.05.24 – No Work
Tues: 28.05.24	8pm	Wed: 29.05.24 - 6am
Wed: 29.05.24	8pm	Thur: 30.05.24 - 6am
Thur: 30.05.24	8pm	Fri: 31.05.24 - 6am
Fri: 31.05.24	8pm	Sat: 01.06.24 - 6am
Sat: 01.06.24	8pm	Sun: 02.06.24 – 6am
Sun: 02.06.24	8pm	Mon: 03.06.24 – 6am

Diversion Map – Landkey Roundabout to Portmore Roundabout

