

**North Devon Link Road – NDLR – A361
(Portmore to Borners Bridge)
Traffic Bulletin – 5th January 2024**



Please find in this bulletin details of upcoming traffic management on the North Devon Link Road.- A361.

There will be significant works carried out in the upcoming period. Most of the works will be carried out at night to minimize disruption to the travelling public. We will continue to update you via separate bulletins with more detail of the works.

There will be night-time traffic lights in areas between Landkey Roundabout and Portmore Roundabout on various dates during January and February. The traffic lights will be used between 8pm and 6am and will be throughout the scheme on short lengths.

The team will be working on a variety of construction work activities. We apologise for any inconvenience.

Night Closures – Bish Mill to North Aller – Jan 2024

As per our previous bulletin, further essential works are planned at Borners Bridge, South Molton for January. The A361 will be closed between Bish Mill Roundabout and Aller Cross Roundabout on the nights below.

Please see dates below. Access to North Molton will remain open apart from the night of Sunday 21st January 2024. Please see Diversion Maps on page 2 of this bulletin.

We apologise for any inconvenience

For all Traffic related matters
24/7 call Traffic Safety Control
Officer (TSCO)
Tel: 07889 225393*

Your Public Liaison Officer for
the NDLR is Lynda Sudlow of
Griffiths. She can be
contacted:

E: NDLR@alungriffiths.co.uk
T: 0330 041 4637*

Calls are monitored out of
normal work hours and a
voicemail facility is available.

Please check out our project
website :
community.alungriffiths.co.uk

If you would like to subscribe
to receive future Newsletters
and Bulletins, please click
[HERE](#) and complete the online
form for Mail Chimp

Calls to these numbers are charged
at national call rates & included in
inclusive minute plans from
landlines & mobiles

Day / Date	Start	Finish	Detail
Mon: 08.01.24	8pm	Tue: 09.01.23 - 6am	A361 full closure. Access open to North Molton
Tue: 09.01.24	8pm	Wed: 10.01.24 - 6am	A361 full closure. Station Rd closed. Access open to North Molton
Wed: 10.01.23	8pm	Thur: 11.01.24 - 6am	A361 open. Traffic lights on North Molton Road.

Night Closures – Bish Mill to North Aller – Jan 2024

Day / Date	Start	Finish	Detail
Thu: 18.01.24	8pm	Fri: 19.01.24 - 6am	A361 full closure. North Molton – Right turn only. Station Road open
Fri: 19.01.24	8pm	Sat: 20.01.24 - 6am	A361 full closure. North Molton – Right turn only. Station road closed.
Sat: 20.01.24	8pm	Sun: 21.01.24 – 6am	A361 open. 3 x way lights at Borners Roundabout (Manual control for N/Molton). Station Rd Closed.
Sun: 21.01.24	8pm	Mon: 22.01.24 - 6am	A361 full closure. Station Rd Closed & North Molton Road closed

North Devon Link Road – NDLR – A361
(Portmore to Borners Bridge)
Traffic Bulletin – 5th January 2024



Northern Diversion - Bish Mill Roundabout to North Aller Roundabout



Southern Diversion - Bish Mill Roundabout to North Aller Roundabout



**North Devon Link Road – NDLR – A361
(Portmore to Borners Bridge)
Traffic Bulletin – 5th January 2024**



Night Closures – Landkey Roundabout to North Aller Roundabout – Jan 2024

Night work continues apace between Landkey Roundabout and North Aller Roundabout on the following dates for essential works, drainage and resurfacing. Work is also ongoing at West Buckland Bridge

Please see below for the diversion map. We apologise for any inconvenience

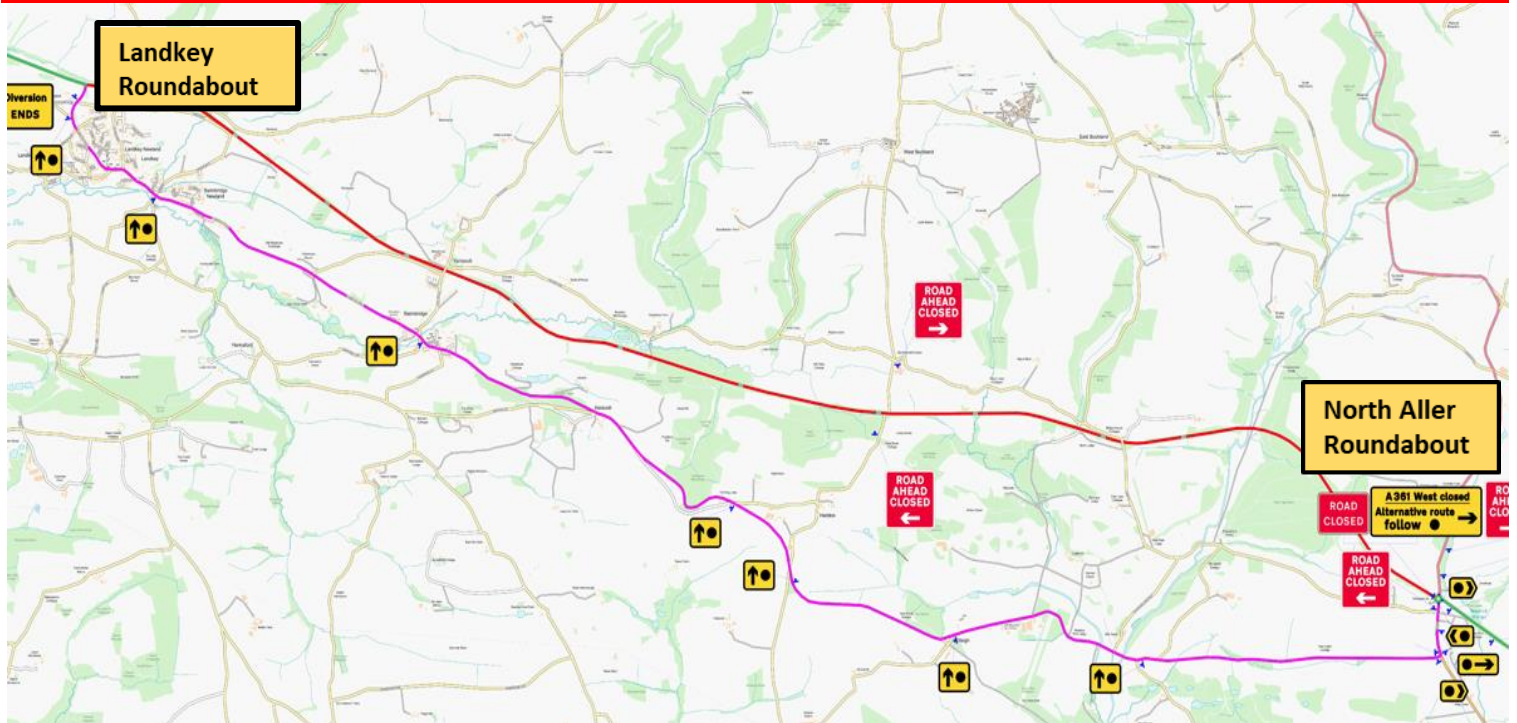
Day / Date	Start	Finish
Mon: 15.01.24	8pm	Tue: 16.01.24 - 6am
Tue: 16.01.24	8pm	Wed: 17.01.24 - 6am
Wed: 17.01.24	8pm	Thur: 18.01.24 - 6am

Night Closures – Landkey Roundabout to North Aller Roundabout – Jan/Feb 2024

Works will take place during the night-time on the following dates on Mondays to Fridays only.

Start date:	Time:
Mon: 22.01.24	8pm
Finish date:	Time:
Sat: 10.02.24	6am

Diversion Map – Landkey Roundabout to North Aller Roundabout – Jan/Feb 2024



Further Bulletins will be issued regularly to give more details and confirm dates



**North Devon Link Road – NDLR – A361
(Portmore to Borners Bridge)
Traffic Bulletin – 5th January 2024**



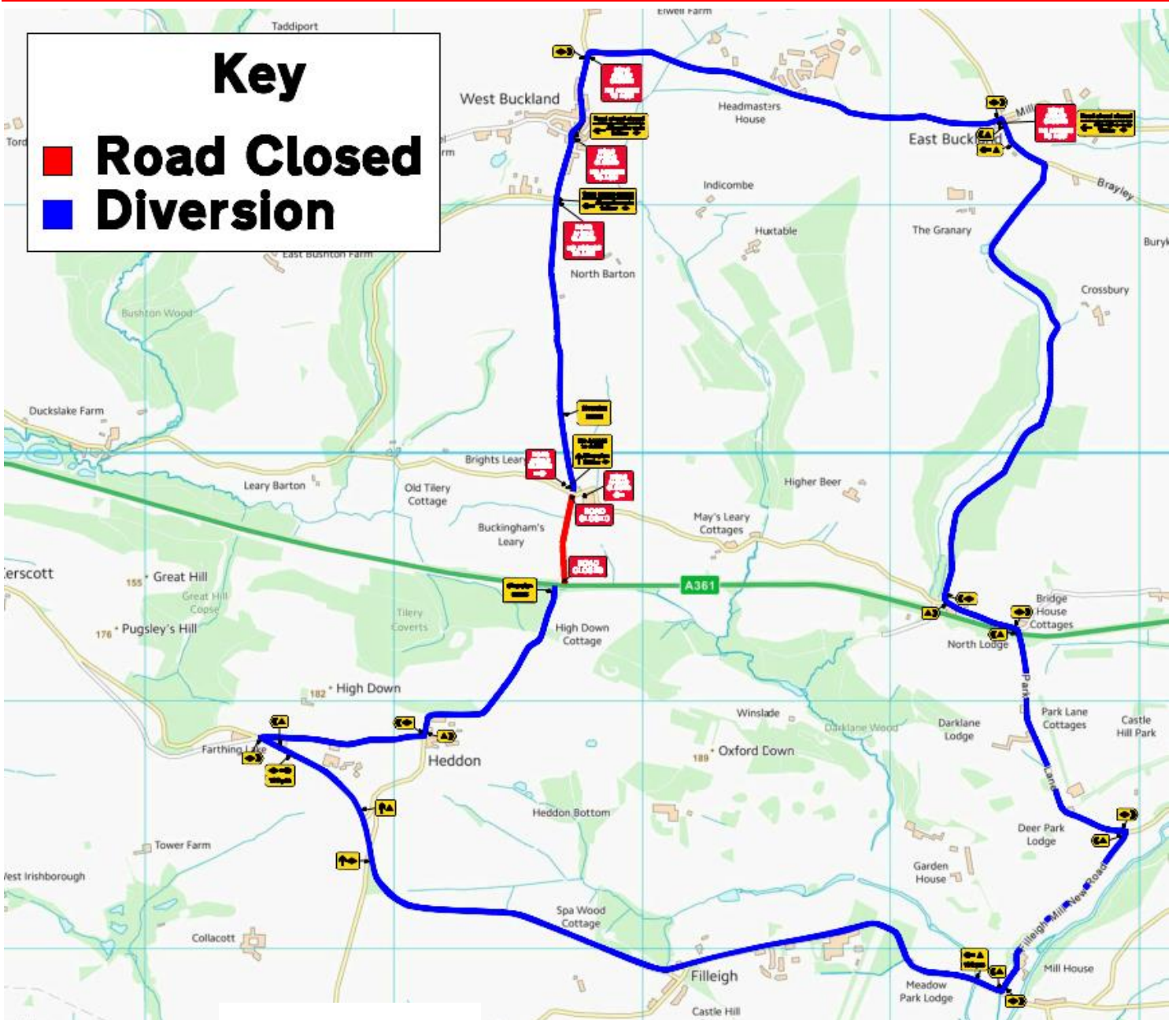
Closure of Side Road at West Buckland Junction

A full 7 day, 24 hour road closure is required to allow the upgrade of the existing junction. Works will include kerbing, drainage and full road construction. Please see the Diversion Map below.

We apologise for any inconvenience.

Day / Date / Time	
Sunday : 11.02.24 @ 00.01 hrs to Saturday: 17.02.23 @ 23.59 hrs	Full 24 hour road closure between Buckingham Leary, West Buckland and A361 West Buckland Junction

Diversion Map – West Buckland Junction



**North Devon Link Road – NDLR – A361
(Portmore to Borners Bridge)
Traffic Bulletin – 5th January 2024**

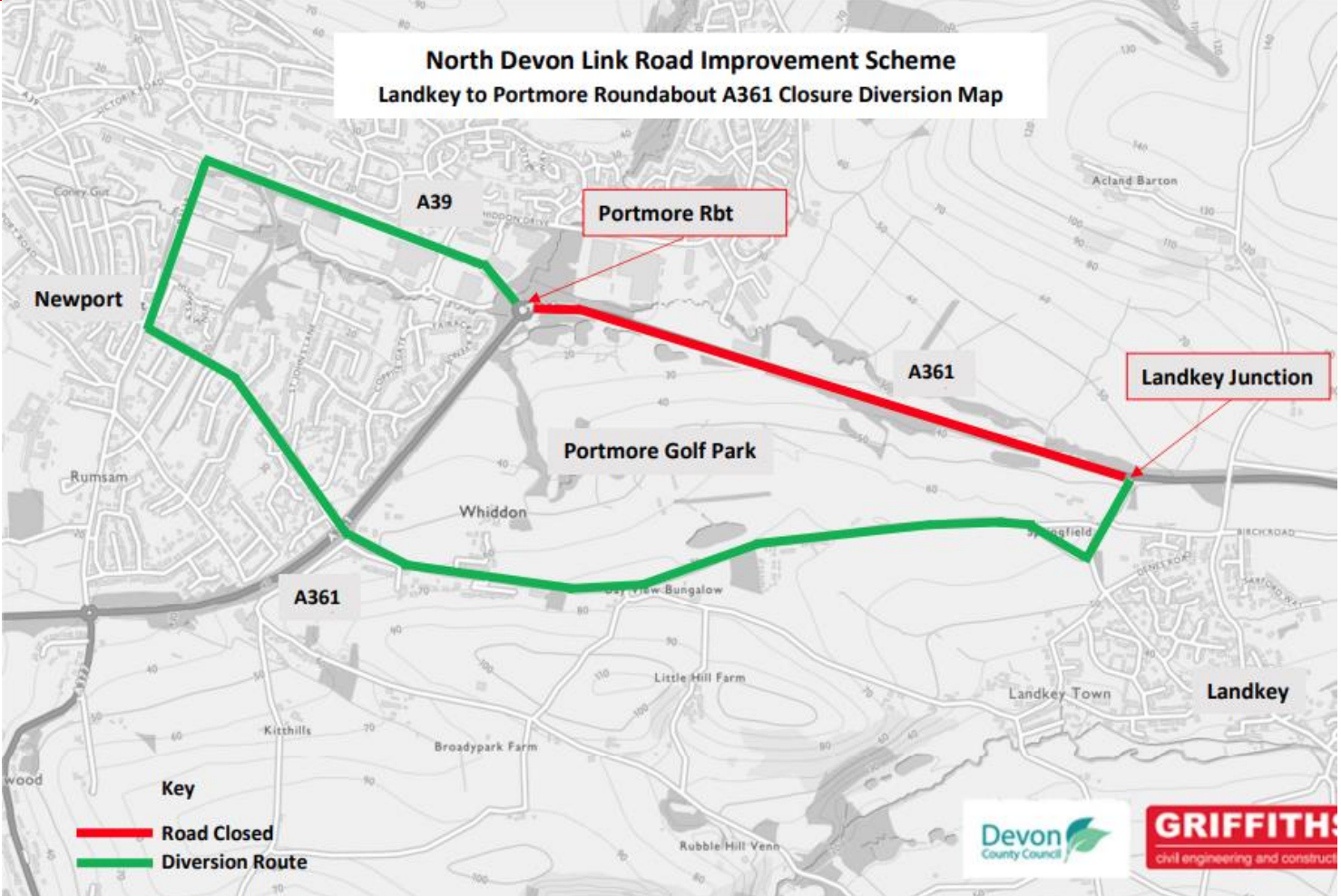


Night Closures – Landkey Roundabout to Portmore Roundabout – Feb 2024

Road closures are required along the whole A361 between Portmore roundabout and Landkey roundabout for laying asphalt and other works.

Day / Date	Start	Finish
Mon: 12.02.24	8pm	Tues: 13.02.24 - 6am
Tues: 13.02.24	8pm	Wed: 14.02.24 - 6am
Wed: 14.02.24	8pm	Thu: 15.02.24 - 6am
Thu: 15.02.24	8pm	Fri: 16.02.24 - 6am
Fri: 16.02.24	8pm	Sat: 17.02.24 - 6am

Diversion Map – Landkey Roundabout to Portmore Roundabout



Further Bulletins will be issued regularly to give more details and confirm dates

